



DIESEL

PAGES 2-6



OIL/LUBE

PAGES 7-9



ADBLUE®

PAGES 10-12

**FLUID HANDLING
EQUIPMENT BROCHURE**

DISTRIBUTED BY –

AGRIEMACH LTD

info@agriemach.com
01342 713743

PANTHER 56/72 DIESEL PUMP

PIUSI



- › Market leading self priming vane pump popular on static fuel tanks
- › C/w sintered steel rotor and mechanical seal
- › Accessible integrated bypass valve and 500µ filter
- › Induction motor with aluminium casing & thermal motor overload
- › Noise level below 75db
- › Continuous running in open flow
- › Protection grade: IP55

Code	Max Flow Rate	V / Amps	Ports
730000	56 lpm	230 / 3	1" F BSP
732000	72 lpm	230 / 4.2	1" F BSP Flanged

BP3000 DIESEL BATTERY KIT

PIUSI



- › Self-priming BP3000 low voltage diesel pump, with carry handle as a portable, ready to dispense kit
- › Manual Self 2000 nozzle & 4m suction/delivery hose, an extra hose tail, jubilee clips and a suction strainer
- › C/w 2m cable & clips for battery connection
- › Incorporated bypass valve and NBR lip seal
- › Supplied in point of display presentation box
- › Protection grade: IP55

Code	Max Flow Rate	V / Amps	Nozzle	Hose
225410	50 lpm	12 / 22	Manual	¾" x 4m
226380	50 lpm	24 / 13	Manual	¾" x 4m

CUBE 56/70 DIESEL PUMP

PIUSI



- › Compact boxed dispenser for wall or tank mounting
- › Self priming, acetal resin vane pump c/w sintered steel rotor, mechanical seal & integrated bypass valve
- › Auto nozzle and holster, with lever pump start and automated pump stop when nozzle is returned
- › K33 flow meter, flexible hose & swivel connections
- › Continuous running
- › Protection grade: IP55

Code	Max Flow Rate	V / Amps	Nozzle	Hose	On/Off Switch
57500C	52 lpm	230 / 3	Auto	¾" x 4m	o
59100A	70 lpm	230 / 4.2	Auto	1" x 4m	o

PIUSIBOX DIESEL PUMP KIT

PIUSI

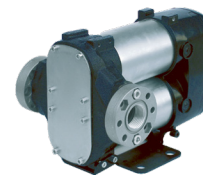


- › BP3000 low voltage diesel pump as a portable pumping solution in a handy & compact carry box
- › Manual nozzle with ¾" BSP swivel and a shorter spout making it easier to pack back inside the box
- › 2m suction & 4m delivery hose, swaged & c/w swivel
- › Locking vantage foot valve & strainer to prevent leaks
- › Terminal box with on/off switch and 4m cable & clips
- › Pro version (F00231010) c/w 10µ particle filter
- › 24v versions also available

Code	Flow Rate	V / Amps	Nozzle	Hose
F00231000	45 lpm	12 / 22	Manual	4m del, 2m suct
F00231010	43 lpm	12 / 22	Manual	4m del, 2m suct

BI-PUMP DIESEL PUMP

PIUSI



- › Powerful low voltage pump for high flow mobile refuelling for when there is no mains power available
- › 2 x BP3000 pumps mounted together to achieve faster transfer & pump attachment support bracket
- › C/w 2m cable & clips for battery connection
- › Sintered steel rotors and acetal resin vanes
- › Cast iron pump body c/w integrated bypass valve
- › Protection grade: IP55

Code	Max Flow Rate	V / Amps	Ports	Duty Cycle
363010	85 lpm	12 / 22	1" F BSP Flanged	30 mins
363030	85 lpm	24 / 21	1" F BSP Flanged	30 mins

SELF 2000 MANUAL NOZZLE

PIUSI



- › Manual nozzle for diesel in low & high flow conditions
- › Cost effective solution for pump and gravity systems
- › Robust construction with die cast aluminium body c/w removable lever protection and HNBR seal
- › Integral hook for hanging nozzle without a holster
- › Available with 1" F BSP Swivel or 1" Hose Tail

Code	Max Flow Rate	Max Pressure	Spout OD	Inlet
641000	120 lpm	5 bar	25mm	1" F BSP Swivel
656000	120 lpm	5 bar	25mm	1" Hose Tail

ROTARY HAND DIESEL/OIL PUMP



- › Cast iron constructed rotary vane pump
- › Cost effective manual dispensing of diesel and oil from drums containing up to 205 litres
- › 2" M BSP drum adaptor and 3 part rigid downtube c/w wire strainer
- › 25mm dispensing spout
- › Max viscosity 410 cSt

Code	Max Flow Rate	Outlet	Downtube	Mounting
CTS2001C	310ml per rev	25mm Bent Spout	1000mm	2" M BSP

AUTO 60/80 AUTO NOZZLE

PIUSI



- › Automatic nozzle for non-resale diesel refuelling
- › Automatically shuts off when the vehicle's tank is full
- › 3 position stay open latch
- › Supplied with 1" F BSP Swivel
- › Different flow rate versions to select from based upon your required speed of dispensing

Code	Flow Range	Max Pressure	Spout OD	Inlet
603060	10-70 lpm	3.5 bar	24mm	1" F BSP Swivel
604030	20-80 lpm	3.5 bar	29mm	1" F BSP Swivel

PIUSI K33 FLOW METER



- > Polybutylene nutating disk meter with mechanical display to show amount of fuel dispensed
- > Works in gravity conditions and pump installations
- > 3 digit resettable* & 6 digit non-resettable totaliser
- > Rotating meter body to allow flow from 4 directions
- > Easy to install and calibrate if required
- > +/-1% accuracy after calibration
- > Working temperature -20°C/+60°C

Code	Flow Range	Pressure	Inlet/Outlet	Totaliser*
553000	20-120 lpm	10 bar/145 psi	1" F BSP	0.1 to 999.9

GRAVITY HOSE KIT - PREMIUM



- > Cost effective, ready-made solution for dispensing diesel from gravity-fed storage tanks
- > Supplied in a clip close bag with carry handle
- > Swaged stainless steel full ferrules and 1" M BSP hose tails with sealing 'o' rings
- > Piusi Self 2000 aluminium manual nozzle
- > 1" M x F locking angle valve (padlock not supplied)
- > PTFE tape supplied as standard

Code	Hose Length	Hose ID	Hose OD	Inlet
OAB3350	3m	25mm	34mm	Locking Angle Valve
OAB2251	4m	25mm	34mm	Locking Angle Valve

PIUSI K24 FLOW METER



- > Turbine meter with digital display to measure the fuel dispensed and provide user with flow rate indication
- > Can be installed inline or by delivery nozzle, & display can be rotated in 4 different positions for easy reading
- > +/-1% accuracy
- > 5 digit partial totaliser and 6 digit totaliser
- > Working temperature -10°C/+50°C
- > LCD display powered by two AAA batteries
- > Aluminium version is bi-directional so flow can be counted either way*

Code	Flow Rate	Pressure	Inlet/Outlet	Material
F00407330	5-120 lpm	10 bar	1" M BSP	Plastic
F00408100	7-120 lpm	20 bar	1" F BSP x M BSP	Aluminium

PIUSI DIESEL HOSE REEL



- > Automatic hose reel for low pressure (10 bar max) diesel pump systems including refuelling applications
- > Sturdy steel structure for heavy duty conditions
- > Protected latch mechanism to prevent hand injuries
- > Reduced pressure loss via correct hydraulic sizing
- > Adjustable arm brackets for easy positioning
- > Bare reel c/w hose clamp, protection spring & hose stop, and a maximum capacity of 10m hose length

Code	Hose	Inlet / Outlet	Pressure Loss
F00750080	N/A	1" M BSP Swivel / 3/4" Hose Barb	0.15bar @ 60lpm
F00750040	10m	1" F BSP Swivel / 1" M BSP	0.7bar @ 60lpm
F00750030	10m	1" F BSP Swivel / 1" M BSP	0.7bar @ 80lpm

CTS MAINS MULTI ZONE ALARM



- > Mains tank alarm for alerting of a combination or all of the following tank states: High, low, and/or bund
- > Zone in question lights up on screen to indicate state
- > 90db sounder and flashing orange strobe for alerts
- > Test and alarm mute functions
- > Automatically reserved float logic for low zones
- > Weatherproof IP55 enclosure
- > Probes purchased separately

Code	Product	V	Alerts	Cable
SWS2000	Alarm	110/230/12/24	High/Low/Bund	
SWS1035	Probe		High, Low or Bund	5m
SWS1035/2	Probe		High and Low	5m

HYDROSTATIC UNITEL GAUGE



- > Tank gauge to show fuel contents in vertical, horizontal, cylindrical & rectangular tanks
- > Pull and release spring loaded plunger to reveal contents as a percentage
- > +/-3% accuracy at full scale
- > Working temperature -5°C/+55°C
- > C/w stainless steel balance chamber weight
- > Adjustable second needle for setting level parameter
- > Gauge face dimensions 155mm x 165mm

Code	Reading	Tank Height (mm)	Capillary	Balance Chamber Tank Fitting
OAB9000	0-100%	900-3000	20m PVC	1/2" M BSP & 1" M BSP

ECONOMY LEVEL/ BUND ALARM



- > Economical, entry level tank alarm for one level alert
- > Version to indicate if tank level has reached a high or low state and version for bund alert
- > Battery powered for portable use, with the battery able to last in excess of 72 hours in full alarm mode
- > 90db sounder and flashing red LED for alerts
- > Test and alarm mute functions
- > Weatherproof IP55 enclosure c/w 4 mounting lugs
- > *C/w 3 stickers to name the LED - high, low & blank

Code	Battery	Probe	Zones
SWS1024*	1 x PP3	0	Single - High or Low
SWS1019	1 x PP3	0	Single - Bund

MT PROFIL FLOAT CLOCK GAUGE



- > Simple and economical float operated clock gauge for quick and clear identification of approx. tank contents
- > Mechanical display showing: Empty, 1/4, 1/2, 3/4, Full
- > 1 1/2" M BSP for easy top mounting onto the tank
- > 4'0 listed in the table but other versions are available
- > 8'0 version is adjustable to the individual tank height and has a reversible display measured in cm
- > Popular choice for heating oil tanks

Code	Reading	Tank Height	Gauge Fitting
OAB3304	Empty, 1/4, 1/2, 3/4, Full	4'0 ft / 1219 mm	1 1/2" M BSP
OAB3308	Cm Display	8'0 ft / 2438 mm	1 1/2" M BSP

PIUSI OCIO FUEL TANK GAUGE

PIUSI



- › Continuous reading, hydrostatic tank contents gauge with digital display showing 0-100%, mm or litres
- › Low and high level status alerts, with flashing LED
- › C/w two configurable relays for connecting to other equipment e.g. low/high level alarm to monitor level
- › Supplied with brass chamber weight & 10m capillary
- › Can be easily calibrated on site
- › +/-1% accuracy at full scale
- › For vertical, horizontal, cylindrical & rectangular tanks

Code	V	Tank Height (mm)	Balance Chamber Tank Fitting	Working Temperatures
F0075510D	230	600-4000	½" M BSP	-20°C/+50°C

CIM-TEK FILTER HYDROSORB

CIM-TEK
FILTRATION



- › Water and particle filter with resin coated paper element for removing water and debris out of fuel
- › Spin-on cartridge for easy replacement once full
- › Can be fitted to suction or delivery end of installation
- › Complete kit c/w one element and one head
- › Element thread: CTH1819: 1"-12 F UNF
CTH1817: 1½"-16 F UNF

Code (Cim-Tek no.)	Flow Rate	Micron	Max Bar	Inlet/Outlet
CTH1830 (70062)	68 lpm	10µ	3.4	1" F BSP Flanged
CTH1818 (70063)	110 lpm	10µ	3.4	1" F BSP Flanged

ENVIROSPILL OIL SPILL KIT

EnViroSpill



- › Spill kit with everything required to quickly deal with a spill, in a portable and compact clip close carry bag
- › C/w 1, 2 or 4 spill socks and 3, 5 or 10 spill pads (kit depending), as well as a blue waste bag and tie for proper disposal of used absorbent's
- › Can float on water - ideal for oil & water separation
- › For all hydrocarbon based oils, fuels and petroleum based liquids

Code	Capacity	Socks	Pads	Disposable Bag & Tie
SPL-OKT-10	10 litres	1	3	0
SPL-OKT-20	20 litres	2	5	0
SPL-OKT-40	40 litres	4	10	0

GOLDENROD FUEL FILTER

GOLDENROD



- › Widely recognised filter range in agricultural market, often used for gravity systems and pump installations
- › Particle only and water & particle versions available
- › Clear bowl containing paper cartridge with drain port for easy removal of filtered impurities
- › Complete kit c/w one element, head, bowl & gasket
- › 1" F BSP inlet/outlet on head

Code	Type	Max Flow Rate	Micron	Max Bar
CTJ1800 (495)	Particle	95 lpm	10µ	10
CTJ1809 (496)	Particle/Water	95 lpm	15µ	10

AIR OPERATED OIL PUMPS

PIUSI



- › Air operated oil pump with 3.5:1 compression ratio
- › 3-8 bar air pressure & 200-250 lpm air consumption
- › Available in stub (175mm) or long length (940mm)
- › 2" BSP bung adaptor for mounting onto a drum or wall
- › Low operating noise limited to 77dB
- › Polyurethane internal seals
- › High performance & durability in garages/workshops
- › 5:1 ration version on request

Code	Ratio	Flow Rate	Suction Pipe	Air Inlet	Outlet
F0021400A	3.5:1	21.5 lpm	175 mm	¼" F	½" M BSP
F0021402A	3.5:1	21.5 lpm	940 mm	¼" F	½" M BSP

AIR OPERATED GREASE PUMPS

PIUSI



- › Air operated grease transfer pump with 60:1 ratio
- › 4-8 bar pressure & 130-160 lpm air consumption
- › Available suction pipe sizes: 470mm for 12.5kg drums, 730mm for 50kg drums or 940mm for 180kg drums
- › Low operating noise limited to 77dB
- › Polyurethane internal seals
- › For heavy duty garage and workshop environments

Code	Ratio	Suction Pipe	For Drum Size	Air Inlet	Outlet
F00216050	60:1	470 mm	12.5 kg	¼" F BSP	¼" M BSP
F00216060	60:1	730 mm	50 kg	¼" F BSP	¼" M BSP
F00216070	60:1	940 mm	180 kg	¼" F BSP	¼" M BSP

AIR OPERATED OIL PUMP KIT

PIUSI



- › 3:1 or 5:1 air operated oil pump in a drum mounted kit
- › K400 flexi spout nozzle & integrated digital flow meter
- › 5m x ½" oil dispensing hose
- › 2" BSP bung adaptor to fit pump to a 205 litre drum
- › Long length 940mm suction pipe
- › 3-8 bar air pressure
- › 200-250 lpm air consumption
- › Mobile versions with trolley are available

Code	Ratio	Flow Rate	Suction Pipe	Air Inlet	Outlet
CTS2100	3.5:1	21.5 lpm	940 mm	¼" F	5m Hose & Nozzle
CTS2101	5.5:1	15.5 lpm	940 mm	¼" F	5m Hose & Nozzle

AIR OPERATED GREASE PUMP KIT

PIUSI



- › P60:1 air operated grease pump in a drum mounted kit
- › 4m delivery hose and grease gun with straight swivel
- › 285mm drum cover with grease gun support and 270mm follower plate
- › Kit specifically designed for a 12.5 kg drum
- › 8 bar maximum air supply
- › 130-160 lpm air consumption
- › Mobile versions with trolley are available

Code	Ratio	Max Air Supply	Air Inlet	Outlet	Drum Size
F00216050	60:1	8 bar	¼" F BSP	4m Hose & Gun	12.5 kg

VISCOMAT VANE 70



- > Electric vane pump for transferring oils and lubricants
- > Sintered steel rotor, acetal resin vanes & viton lip seal
- > Integrated adjustable bypass valve
- > Continuous running in open flow situations
- > Smooth flow, high suction capacity & low noise level
- > Maximum fluid temperature of +70°C
- > Viscosity up to 500cSt (check at lowest temperature)
- > Protection grade: IP55

Code	Max Flow Rate	V / Amps	On/Off Switch	Pressure bar / psi	Ports
334900	25 lpm	230 / 5.5	o	6 / 87	1" F BSP
339900	25 lpm	110 / 12.7	o	3 / 43	1" F BSP

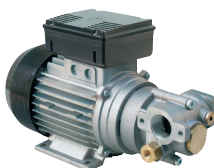
OIL BUCKET LEVER PUMP



- > Lever hand oil bucket pump fitted with its own 16kg capacity container
- > Cost effective dispensing of small quantities of oil
- > Sealed lid keeps the oil from contamination but can be unscrewed to refill the container from a drum
- > 2m flexible delivery hose, spout & suction downtube
- > Integrated carry handle for easy mobility in workshops
- > Foot plate to keep the pail sturdy whilst in operation

Code	Max Flow Rate	Capacity	Hose	Downtube
F0033216A	40g per stroke	16kg	2m c/w Spout	o

VISCOMAT GEAR PUMP



- > Electric gear pump for transferring at higher pressures
- > Aluminium body, sintered steel gears & NBR 902 seal
- > Integrated adjustable bypass valve
- > Continuous running in open flow situations
- > Smooth flow, high suction capacity & low noise level
- > Maximum fluid temperature of +70°C
- > Viscosity: 50-2000cSt (check at lowest temperature)
- > Protection grade: IP55

Code	Max Flow Rate	V / Amps	On/Off Switch	Pressure bar / psi	Ports
304030	9 lpm	230 / 3.8	o	12 / 174	1" F BSP
304300	14 lpm	230 / 6	o	12 / 174	1" F BSP

GREASE BUCKET LEVER PUMP



- > Lever hand grease bucket pump fitted with its own 16kg capacity container, follower plate & suction pipe
- > Cost effective dispensing of small quantities of grease
- > Sealed lid keeps the grease from contamination but can be unscrewed to refill the container from a drum
- > 2m high pressure delivery hose, 4 jaw connector and ball valve to prevent leaking when not in use
- > Integrated carry handle for easy mobility in workshops
- > Foot plate to keep the pail sturdy whilst in operation

Code	Max Flow Rate	Capacity	Hose	Downtube
F0033215A	40g per stroke	16kg	2m c/w 4 Jaw Connector	o

PIUSI PREMIUM ROTARY PUMP



- > Self priming rotary hand pump with stainless steel casing for reliability and durability when dispensing
- > Smooth operation thanks to its rolling handle grip and quality constructed internals
- > 2" M BSP drum connector and suction downtube
- > Grooved locking mechanism on pump inlet and 2" M BSP drum connector to stop it spinning on the drum
- > "S" type spout ideal for dispensing straight into a jug
- > Suitable for dispensing from drums up to 205 litres

Code	Max Flow Rate	Max Viscosity	Spout	Downtube
F00332500	380ml per rev	25mm Bent Spout	"S" Spout	o

K400 NOZZLE METER



- > Easyoil nozzle with integrated K400 digital meter for easy view of how much has been dispensed
- > +/-0.5% accuracy
- > Swivel inlet contains wire mesh filter
- > Trigger lock to prevent accidental operation
- > Automatic non-drip valve on spout versions
- > Colour coded hand grips & swivel protectors available

Code	Max Flow Rate	Pressure Range	Spout Type	Inlet Connection
F00984000	30 lpm	4-70 bar	Rigid	½" F BSP Swivel
F00984010	30 lpm	4-70 bar	Flexi	½" F BSP Swivel

OIL MEASURE JUGS & FUNNELS



- > Measuring jugs and funnels for easy transfer of oils
- > All c/w flexi spout and cap or lid to prevent spillages
- > Transparent polyethylene for checking contents
- > Filter inside the funnel to prevent any large debris from falling in and contaminating the oil
- > Jugs available in 1 litre, 2 litre or 5 litre sizes
- > Funnels available with 180mm or 220mm diameter

Code	Type	Capacity/Size	Spout	Cap/Lid
916000	Jug	1 litre	Flexi	o
917000	Jug	2 litre	Flexi	o
920000	Jug	3 litre	Flexi	o
930000	Funnel	180mm Ø	Flexi	o
931000	Funnel	220mm Ø	Flexi	o

GREASE CONTROL NOZZLE



- > Grease control nozzle for the dispensing point of an air operated grease pump installation
- > Spring type pistol trigger
- > C/w a rigid spout hose with 4 jaw connector
- > Straight and Z swivels are available as inlet accessories

Code	Description	Max Pressure	Inlet Connection	Spout
F20605000	Nozzle	470 bar	¼" F BSP	Rigid
F20603000	Optional Accessory		¼" Straight Swivel	
GV9002	Optional Accessory		¼" Z Swivel	

SUZZARA BLUE AC ADBLUE® PUMP



- › Self priming 5 chamber membrane pump designed specifically for dispensing AdBlue®
- › Mains powered for fixed pumping installations
- › Protected on/off switch
- › Integrated bypass valve
- › 2m cable with UK plug
- › Custom designed 'o' ring sealed plastic fittings
- › Protection grade: IP55

Code	Max Flow Rate	V / Amps	Ports	Duty Cycle
F00203050	34 lpm	230 / 1.95	1" M BSP & 3/4" Hose Tail	20 minute

MANUAL PISTON ADBLUE® PUMP



- › Polypropylene piston hand pump c/w viton seals
- › Cost effective dispensing from drums up to 205 litres
- › 2" M BSP or 56x4 Tri-sure® drum adaptor
- › Telescopic downtube 510mm-920mm
- › CTS2037: C/w 2m delivery hose, 19mm spout & hook
- › CTS2020: C/w 19mm spout only

Code	Flow Rate (Per Stroke)	Drum Adaptor	C/w	Downtube
CTS2037	Max. 330ml	56x4 Tri-sure®	2m hose, 19mm Spout & Hook	510-920mm
CTS2020	Max. 330ml	2" M BSP	19mm Spout	510-920mm

SUZZARA BLUE DC ADBLUE® PUMP



- › Self priming 5 chamber membrane pump designed specifically for dispensing AdBlue®
- › Low voltage for mobile transfer when without power
- › Protected on/off switch
- › Integrated bypass valve
- › 2m cable & clips for connection to a battery
- › Custom designed 'o' ring sealed plastic fittings
- › Protection grade: IP55

Code	Max Flow Rate	V / Amps	Ports	Duty Cycle
F00204080	34 lpm	12 / 22	1" M BSP & 3/4" Hose Tail	20 minute
F00204090	34 lpm	24 / 13	1" M BSP & 3/4" Hose Tail	20 minute

PIUSI PREMIUM ROTARY PUMP



- › Self priming rotary hand pump with stainless steel casing for dispensing AdBlue® from 205 litre drums
- › Smooth operation thanks to its rolling handle grip and quality constructed internals
- › 56x4 drum connector and 3 part suction downtube
- › Grooved locking mechanism on pump inlet and drum connector to stop it spinning on the drum
- › Version with 2.5m delivery hose and stainless steel spout c/w spout stopper to prevent crystallisation

Code	Max Flow Rate	S/S Spout	Hose	Downtube
F00332A20	380ml per rev	19mm	2.5m	o
F00332A00	380ml per rev			o

SUZZARA BLUE IBC PUMP KIT



- › Self priming AC Suzzara Blue membrane pump in a ready to use kit c/w stainless steel plate & safety cord
- › Easy mounting and moving from one IBC to another
- › 6m delivery, 1.5m suction hose & SEC connector
- › Hose & nozzle support with drip catcher
- › Pro version c/w auto nozzle and K24 flow meter
- › Basic version c/w manual nozzle and no flow meter
- › Protection grade: IP55

Code	Pump Kit Version	Flow Rate	V	Nozzle	Meter
F00201BIO	PRO	32 lpm	230	Auto	o
F00201BLO	BASIC	32 lpm	230	Manual	

SUZZARA BLUE MANUAL NOZZLE



- › Manual nozzle for cost effective AdBlue dispensing
- › Suitable for both pump and gravity fed installations
- › Polypropylene body with a stainless steel spout
- › Integral hook for hanging nozzle without a holster
- › Viton seals
- › 3/4" hose tail or 1" M BSP depending on requirement

Code	Max Flow Rate	Max Pressure	Spout OD	Inlet Connection
F14280000	80 lpm	3.5 bar	19 mm	3/4" Hose Barb/ 1" M BSP

ELITE THREE 25 IBC PUMP KIT



- › A deluxe, high spec kit with a self priming AC pump
- › Stainless steel plate, robust roller bars for protection and locking bracket for sturdy connection to the IBC
- › 6m EPDM delivery hose & high capacity hose holder
- › SB325 auto nozzle & breakaway spout with integrated K24 meter (magnetic missfilling spout version available)
- › Nozzle holster with removable drip cup
- › AdBlue long life 3D filter and SEC connector

Code	Max Flow Rate	V	Nozzle	Spout Type	Hose
F00101040	32 lpm	230	SB325 Meter	Standard	6m del, 1.5m suct
F00101040M	32 lpm	230	SB2325 Meter	Standard & Magnetic	6m del, 1.5m suct

STAINLESS STEEL AUTO NOZZLE



- › Auto nozzle for dispensing within pump installations
- › Automatically shuts off when vehicle tank is full
- › Stainless steel body & spout with plastic guard
- › 3 position stay open latch
- › Viton seals
- › 3/4" swivel hose tail for easy hose connection by means of a stainless steel jubilee clip

Code	Max Flow Rate	Max Pressure	Spout OD	Inlet Connection
F00619030	60 lpm	3.5 bar	19 mm	3/4" Hose Barb Swivel

SB325 NOZZLE & NOZZLE METER



PIUSI

- › Auto shut off nozzle when the vehicle tank gets full
- › Magnetic spout prevents accidental and costly miss-filling of AdBlue into the diesel tank by only releasing fluid into a fill point with partnering magnetic adaptor
- › Breakaway spout for quick detach, if the driver drives off forgetting that the nozzle is still inside the fill point
- › C/w magnetic miss-filling spout and 19mm spout OD
- › Version with integrated meter to show QTY dispensed

Code	Integrated K24 Meter	Max Flow Rate	Max Pressure	Inlet Connection
F00618M40		35 lpm	3.5 bar	¾" Hose Barb / 1" M BSP
F00618M50	o	35 lpm	3.5 bar	¾" Hose Barb / 1" M BSP

ADBLUE® GRAVITY KIT - PREMIUM



- › Ready-made solution for dispensing AdBlue from a bottom outlet, gravity-fed IBC
- › ¾" swaged EPDM AdBlue delivery hose
- › Piusi Suzzara Blue manual nozzle
- › 60 x 6 IBC bottom adaptor & 1" F x F cam fitting
- › Camlock coupling configuration allows hose assembly to be easily removed from the IBC for added security
- › Polypropylene hose tail & stainless steel clamp rings

Code	Hose Length	Hose ID	Hose OD	Inlet
AD-DELKIT3	3m	19mm	27mm	Thread 60x6
AD-DELKIT4MTR	4m	19mm	27mm	Thread 60x6

K24 ADBLUE® FLOW METER

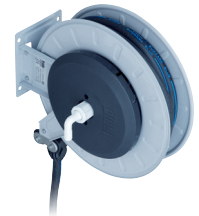


PIUSI

- › Turbine meter with digital display to measure the fluid dispensed and provide user with flow rate indication
- › Can be installed inline or by delivery nozzle, & display can be rotated in 4 different positions for easy reading
- › +/-1% accuracy
- › 5 digit partial totaliser and 6 digit totaliser
- › Working temperature -10°C/+50°C
- › LCD display powered by two AAA batteries

Code	Flow Rate	Pressure	Inlet/Outlet	Totaliser
F0040710A	6-100 lpm	10 bar / 145 psi	1" M BSP / 1" M BSP	0.1 to 9999 Six Digit Totaliser x 10, x 100

ADBLUE® HOSE REEL WITH HOSE



PIUSI

- › Automatic hose reel for low pressure AdBlue pumping
- › Protected latch mechanism to prevent hand injuries
- › Adjustable arm brackets for easy positioning
- › Hose stop for locking at the chosen length
- › Reduced pressure loss through correct sizing of the hydraulic system

Code	Hose Length	Max Pressure	Inlet	Outlet	Pressure Loss
F00750070	8m	10 bar	¾" Swivel Hose Barb	¾" Open Hose	0.4 bar @ 35 lpm
F00750110	15m	10 bar	¾" Swivel Hose Barb	¾" Open Hose	0.6 bar @ 35 lpm